

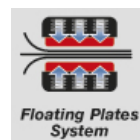


Mod. 647.02

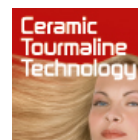
## SILHOUETTE

### PROFESSIONAL HAIR CRIMPER

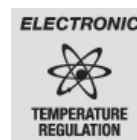
- Large professional 6-waves-plates
- Ceramic/Tourmaline-coated plates
- Tourmaline: natural source of negative ions for an antistatic effect
- Floating Plates System for an uniform contact on hair
- Fine and continuous electronic temperature regulation
- Max temperature 210°C
- Cool tips
- Swivel cord 3 m



Floating Plates System



Ceramic  
Tourmaline  
Technology



ELECTRONIC  
TEMPERATURE  
REGULATION



UNIVERSAL  
VOLTAGE  
100-240 V